



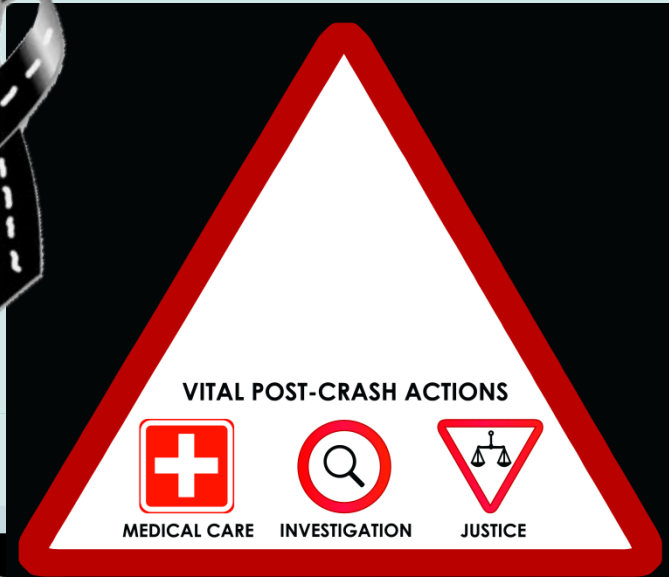
Learn from  
yesterday,  
live for today,  
**hope for  
tomorrow**

-Einstein-

# Symposium Post Crash Response

Yolanda Domenech

FEVR Psychological support consult



4th April 2017

Kuala Lumpur - Malaysia

# What is post crash response?



Yolanda Domenech

FEVR Psychological support consult



# Fighth of victims' associations



*The claim to include pillar 5 is a result of the fight of victims' associations who know firsthand what it means to live a road crash and are well aware of its consequences and also the deficiencies of administrations and society.*

**POST CRASH RESPONSE** → *adopted as PILLAR 5 of the Decade of Action*

Consists of reducing the impact of road crashes and securing an appropriate legal process and facilitating the recovery of those affected.



Yolanda Domenech  
FEVR Psychological support consult



A road crash scars a before and after in people's lives



Human being is resilient: has the **capacity to face traumatic experiences and to extract a benefit, understood as vital learning.**

We know that the human being is able to resist and recover from the adversities of life, but **society must offer all the guarantees to make it possible.**

## POST-CRASH RESPONSE



Yolanda Domenech

FEVR Psychological support consult



What is post-crash response?

*Today we still assume that mobility kills, leaves millions of people with severe disabilities and creates a lot of pain and suffering.*

*Therefore we must demand that there is an adequate post-crash response to ensure a good quality of life for road crash victims.*

## WHAT IS POST-CRASH RESPONSE

HEALTH CARE

JUSTICE

SOCIAL INCLUSION



Yolanda Domenech

FEVR Psychological support consult

What is post-crash response?



## HEALTH CARE



**Emergency medical** services and immediate **post-crash medical care.**

**Rehabilitation treatments.**

Access to **assistive devices** (orthoses, prostheses or wheelchairs) or **other long-term treatments** when necessary.



**First aid psychological care.**

Professionals specialized in **delivering bad news.**

**Follow up** psychological treatment when needed.

Helps to **avoid secondary traumatization.**



## JUSTICE

## CLEAR INFORMATION

Professionals who care for the victims must understand that it is important to treat them with **sensitivity and honesty**

Moment of **disorientation** in a time of great **vulnerability** and in which a series of **important decisions** have to be made regarding procedures that will have a great transcendence later, at the moment of the trial, for example.



Fédération Européenne des Victimes de la Route  
European Federation of Road Traffic Victims

Yolanda Domenech

FEVR Psychological support consult

What is post-crash response?



# JUSTICE

## INVESTIGATION

Road crash victims should be treated with the same priority as other victims of crime and violence.

When there is a death or a casualty with serious consequences, it is important that a **thorough investigation** is carried out and the **causal factors are determined** as soon as possible, as is the case with other crimes.

**Legal responsibility** derives from the result of the investigation.

Knowing the **causes of the crash** helps to **prevent future crashes and losses**.





## JUSTICE

**Quick justice** with established **protocols** and **not** susceptible to the **interpretation** of the judge.

Justice which takes into account the **seriousness of the facts**, helps to **avoid secondary traumatization** and favors the closure of the **grieving process**.

At the same time acts as a **deterrent**, preventing its repetition and therefore less loss and avoidable injuries.



Fédération Européenne des Victimes de la Route  
European Federation of Road Traffic Victims

Yolanda Domenech

FEVR Psychological support consult

What is post-crash response?



## SOCIAL INCLUSION

Ensure **social and labor integration** of the victims, to help them **normalize their lives** and feel that they are **part of society**.



A **disability** leaves the person who suffers it at a distinct **disadvantage** and it is also important to work to ensure their inclusion into society.



## OFFICIAL RECOGNITION

Support and recognition by the administrations.

It is important to think about anniversaries and plan, along with those affected, **collective ceremonies**, memories, memorials, elements that contribute to the **elaboration of traumatic mourning**.

## World Day of Remembrance of Road Traffic Victims 3dr Sunday of november



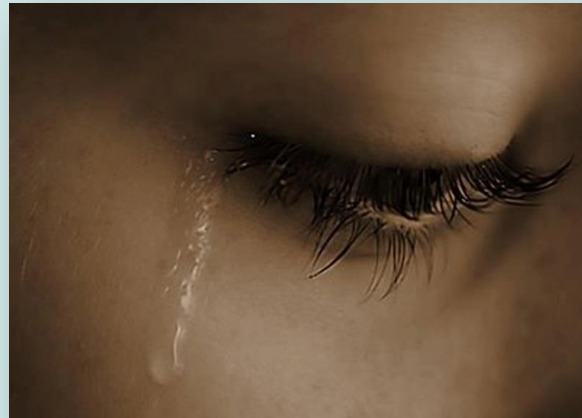
Yolanda Domenech  
FEVR Psychological support consult



What is post-crash response?



**Post -crash response** contributes to **improve the quality of life** of the **victims**. Helps to **avoid secondary traumatization** resulting from the feeling of loneliness and incomprehension, and the sense of isolation often experienced by people affected by road crashes.



And indirectly helps to prevent more accidents as it avoids overmedication and addictions that causes danger on roads.



Thank you for your  
attention

Yolanda Domenech  
FEVR Psychological support consult



4th April 2017

Kuala Lumpur - Malaysia

